



Champion Power Equipment, Inc., Santa Fe Springs, CA USA

MODEL #102010

PARTS INFORMATION

AUTOMATIC TRANSFER SWITCH WITH aXis CONTROLLER™ MODULE

SERIAL NUMBER RANGE: ALL



To order replacement parts please visit:
shop.championpowerequipment.com
or call **1-877-338-0999**.

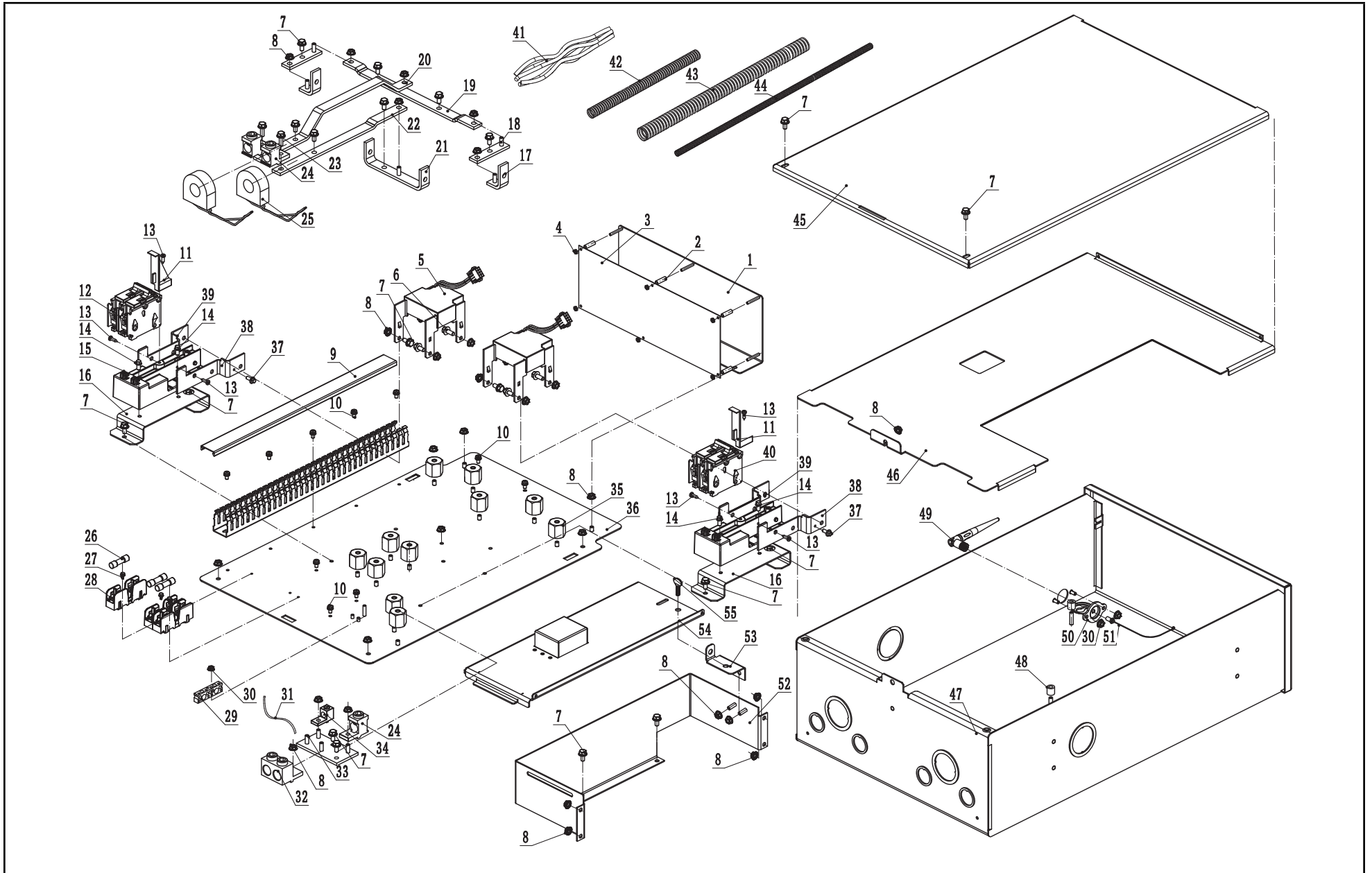
TABLE OF CONTENTS

Parts Diagram **3**

Parts List **4**

Wiring Diagram **5**

PARTS DIAGRAM



PARTS LIST

#	Part Number	Description	Qty.
1	165.216300.01	Bracket, PCB	1
2	2.13.032	Spacer, Standoff Nylon, Ø4.5 x Ø6.5 x 18	6
3	165.216002.00	PCB	1
4	1.6177.04	Nut M4	6
5	5.1270.002	Relay, Latching 200A	2
6	1.5789.0615	Flange Bolt M6 x 15	4
7	1.5789.0612	Flange Bolt M6 x 12	21
8	1.6177.1.06	Nut M6, Flange	31
9	165.216008.00	Duct, Wiring	1
10	1.9074.4.0414.2	Screw/Washer Assembly M4 x 14	10
11	165.216600.00	Pressing Plate	2
12	5.1242.9100	100 Amp Circuit Breaker, 10000	1
13	1.845.4216	Screw, ST4.2 x 16	6
14	1.16674.0612	Flange Bolt M6 x 12	4
15	165.216006.00	Base, Circuit Breaker Mount	2
16	165.216300.00	Bracket, Circuit Breaker Base Mount	2
17	165.216400.01	Bar, Bus (1)	2
18	165.216400.03	Bar, Bus (3)	2
19	165.216400.04	Bar, Bus (4)	1
20	165.216400.05	Bar, Bus (5)	1
21	165.216400.02	Bar, Bus (2)	1
22	165.216400.06	Bar, Bus (6)	1
23	1.5789.0620	Flange Bolt M6 x 20	2
24	165.216004.00	Lug, Solderless	3
25	165.210200.01	Transformer, Current	2
26	5.1280.013	Fuse, KTK	3
27	1.823.0408	Screw M4 x 8	3
28	165.216007.00	Fuse Block	3
29	165.216004.03	Lug, Ground Neutral	1
30	1.6177.1.05	Nut M5, Flange	3

#	Part Number	Description	Qty.
31	5.1900.140	Grounding Line, 80mm	1
32	165.216004.01	Lug, 2 Conductor	1
33	165.216500.00	Bar, Bus Neutral Wiring	1
34	165.216004.02	Lug, Neutral Bonding	1
35	165.216005.00	Standoff, Glastic M6 x 25.4	11
36	165.216200.00	Subplate Assembly, ATS	1
37	1.16674.0520	Flange Bolt M5 x 12	4
38	165.216003.02	Bar, Bus Circuit Breaker, Right	2
39	165.216003.01	Bar, Bus Circuit Breaker, Left	2
40	5.1242.9100.1	100 Amp Circuit Breaker, 22000	1
41	102007.21.10	Wire Assembly	1
42	5.1320.007	Conduit, Plastic, 470 mm, CSA	1
43	5.1320.035	Conduit, Plastic, 850 mm, CSA	1
44	5.1320.010	Conduit, Plastic, 1300mm, CSA	1
45	165.216100.01.24	Enclosure, Cover ATS	1
46	165.216001.05.24	Dead Front, Enclosure	1
47	165.216100.00.24	Enclosure Assembly, Base ATS	1
48	2.13.033	Spacer, Aluminum, Ø6.55 x Ø12.7 x 12.7	5
49	5.1880.002	Antenna, Wifi Module	1
50	5.1891.001	Isolator, Wifi Antenna	1
51	5.1890.001	Transconnection	1
52	165.216300.02	Bracket Assembly, Sub Plate	1
53	165.216300.03	Bracket, Support Supply Auth	1
54	165.216001.06.24	Cover Assembly, Dead Front	1
55	2.08.144	Bolt M6 x 10	1

WIRING DIAGRAM

